



36<sup>TH</sup> ANNUAL

2 year old velvet  
of Orange 16



# SOUTHERN ELITE Elk/Wapiti Sire Sale



**Pullars  
Littlebourne Farm Ltd**

321 Devereaux Road, Winton  
1.00pm, Monday 13th January 2025



Look at the dopey names on this menu! What's a Wapiti Burger?



# To all Deer Farmers

Greetings and welcome.

Our entry into breeding and selling high producing stud animals is no accident. Four generations of breeding stud sheep and dairy animals preceded our investment in the deer industry 45 years ago.

Our view is that breeding from our sires mated to Red, Hybrid, Fiordland or New Zealand Wapiti is the most efficient and profitable. We have been weighing and culling animals for 40 years and are now involved with **Deer Select**.

Exciting opportunities for buyers looking to take advantage of excellent demand for deer products abound in our offering for those upgrading their herd sires.

Please be reminded: –

- 1 You can expect low birth weight fawns that just keep growing.
- 2 No animals enter our breeding/selling programme have had assisted births.
- 3 All animals have a background of Fiordland Wapiti.
- 4 All sires have been blood tested for Johnes and are **negative**.
- 5 We take pride in that buyers from lifestyles to large farming operations are repeat clients.
- 6 Astute observers will have noted that Littlebourne Sires over 3 years feature in a nationally promoted Deer Select Wapiti.
- 7 Littlebourne Wapiti are not:
  - A Overfed
  - B Over promoted
  - C Over priced
- 8 Since 1987 we have showed quality velvet, our best effort Champion of Champions at the 2019 Elk/Wapiti Competition!
- 9 We value the support of agents, clients and associates over 45 years of deer farming.
- 10 Have a safe, happy and prosperous 2025.

Note these 36 live weights are back abit because of the 2023 winter & spring of 2024

*Geoffrey & Sam*

**PEDIGREE      PRODUCTION      PROFIT**





# **SOUTHERN ELITE ELK/WAPITI SIRE SALE**

**on farm Devereaux Road Winton,  
Monday 13th January 2025**

**Sale commences 1:00pm**  
*Velvet will be on display on Sale day*

## **ANIMAL INSPECTION**

Inspection prior to sale by arrangement with Ben Beadle or the vendors. On the day of the sale, bulls may be viewed from 12 noon.

## **T.B. STATUS**

All bulls are from C10 Status (minimum) properties. Accredited for over 30 years.

## **GRAZING**

Grazing is available for a limited period, while purchasers await transport arrangements. Any grazing arrangements must be made with the Agent's office, on sale day. All care and no responsibility. **ALL DEER MUST BE INSURED.**

## **INSURANCE**

Insurance facilities will be available at the Agent's offices.

## **GUARANTEE**

If a bull proves to be sterile it will be replaced by an animal of similar quality or the purchase price refunded. The guarantee refers specifically to sterility and not to any other condition due to accident or illness. (No claims after 12 months of sale.)

## **CONDITIONS OF SALE**

1. The sale will be conducted by PGG Wrightson with the conditions of sale as set down by the New Zealand Livestock and Stations Agents Association, a copy of which is exhibited at the sale venue on the day.
2. Deer will be offered as catalogued, subject only to final draft.
3. Intending purchasers are required to register at the office prior to commencement of sale to obtain buyer's number and advise appropriate stock and station agents.
4. Each lot shall become the property and responsibility of the purchaser on the fall of the hammer.
5. Terms will be strictly cash before taking delivery of any animal unless prior arrangements are made with the Auctioneers. Accounts not paid within 14 days of the sale shall bear interest at current rate per annum from the date of purchase.
6. A buyer commission of 4% is payable to non participating companies and recognised independent agents introducing and with purchasers, with prior (24hrs) arrangements made with PGG Wrightsons.

**PEDIGREE      PRODUCTION      PROFIT**

7. Sale will be conducted G.S.T. exclusive.
8. Purchasers must give complete delivery instructions to the office, using one of the delivery instruction sheets in the back of the catalogue, and receive delivery docket before removing the animals.
9. The descriptions of deer in the sale are supplied by the individual vendor who alone is responsible for their accuracy.
10. Except as otherwise expressly provided in these conditions, no guarantee, representation or warranty of any kind is made or given as to the soundness, condition or other quality of any livestock sold in this sale.

**DISCLAIMER**

All details and descriptions as to stock referred to in this catalogue have been supplied to PGG Wrightson by the Vendor and have not been independently verified by PGG Wrightson. PGG Wrightson, its employees and agents make no representations or warranties or acknowledgement of any kind whatsoever in relation to any part of this catalogue (including, but not limited to the accuracy or completeness of details and descriptions of stock [and other contents]).

Purchasers, advisors and all other persons viewing or dealing with the stock must make their own assessment and judgement on the stock and the information in this catalogue.

PGG Wrightson, its employees and agents are not responsible or liable in any way whatsoever, whether in contract, tort (including negligence), or otherwise, to any person for any loss or damage whatsoever arising directly or indirectly from any information or representation included in or omitted from this catalogue.

*For further information contact:*

**PGG WRIGHTSONS:**

Ben Beadle  
Mobile: 027 728 1052

Geoffrey Pullar  
03 236 1985  
027 6179 971

Ron Schroeder  
Mobile: 027 432 1299

Tony Cochrane  
027 591 8438

John Williams  
Mobile: 027 241 4179

Steve Anan  
027 215 6671

Murray Coutts  
Mobile: 027 403 9377

Luke Thompson  
027 308 3426



**All our velvet is grown to Wapiti One Grade or Supreme.**

**Not overgrowth, please note this.**

To compliment our line-up, all the Dams listed are high achievers, great mothers that show after 45 years of recording the 'cream' always comes to the top!

## SIRE REFERENCE

---

### PROPHECY

10.9kg EW Supreme at 2yrs

15.7kg EWS at 3yrs

21.5kg EWS at 4yrs (NZ record for age)

Our top velvet sire.

Top 10% eye muscle.

Top 2% velvet.

Top 2% for conception date, so gets them pregnant early.

---

### BLUE 15

A Mojo grandson

3yr old velvet = 11.4kgs

3rd in National 3yr Comp

Birth to a year growth rate 520g/day

Used at Littlebourn last 4yrs as a sire bull

### NIWA

Top 10% for Carla, Top 10% eye muscle, Top W12

A big farmed sire.

36mth weight 202kg and a 496g/day weight gain.

2yr old velvet = 7.9kg

3yr old velvet = 11.4kg

4yr old velvet = 15.1kg

23kg velvet in 2024 season

---

## Genetics – use them to your best advantage.

The breeding objectives of your herd need to align with the breeder you buy your genetics from. The progress we are making in the traits that are relevant to you should be your focus.

At Littlebourne we select for:

- Temperament – zero tolerance
- Conformation – eye appraisal for body type, feet and jaw
- Growth – trait in Deer Select is WT12eBV – weight in kg at 12mth old
- Meat – trait in Deer Select is EMAAcBV – eye muscle area in cm<sup>2</sup>
- Carcass Weight – in Deer Select
- Parasite Immunity – trait in Deer Select is CARLA10eBV – the antibody response in saliva against parasite challenge. High levels are associated with lower gut worms
- Velvet – Deer Select is currently revising their Wapiti Velvet Module and so actual velvet weights are presented in this catalogue
- Terminal Index – growth and meat traits are economically weighted and combined to give a single value in dollars

EMAcBV has been shown to be a very powerful trait in deer. Not only does it select for carcass composition – a greater proportion of the carcass in the higher value cuts but it also has a high correlation to dressing out percentage, the meat to bone ratio, venison tenderness and venison eating quality (texture, succulence and aroma).

The table below shows the percentile bands for CARLA, carcass weight, growth, meat and the Terminal Index. The percentile bands are based on all the 2020 born female and males of the 7 herds of Wapiti breeders on Deer Select. This is based on the official run of Deer Select in December 2023.

Once you know the traits that are most value to your operation the select for the bull with the darkest colour for that trait.

The Littlebourne herd has been recording for Deer Select since 2015 and back data has been loaded for previous years.

An eBV is the genetic merit of an individual for a given trait once all environment factors are removed; date of birth, age of mob etc. The W12eBV indicated the animals merit for growth to 12 months of age. EMAcBV indicates muscling. The Terminal Index is a combination of an animals merit of growth and meat – higher value indicates a greater return to a venison focused deer system. The Index is in \$/hind mated.

### *Standardisation of Catalogue Information:*

A consensus has been agreed to between Wapiti breeders regarding parameters for performance data entered in our sale catalogues. We have all agreed to use standardised weighing times. Growth rates will be based on actual birth dates (or derived from foetal aging), estimated birth weights of 17kg for male calves and 15.5kg for female calves and their 12mth/December weight.

**Please note first calvers are disadvantaged in weight 12 as fawns from first calvers are naturally smaller with milk production of first calvers being less therefore their growth rate will naturally be less. So first calvers on Deer Select – their fawns will have less W12 than MA cows.**

**Also an outside Bull not on Deer Select starts on O-zero so any sale bull to a sire bull that isn't on Deer Select has a naturally less EBV for all traits. Littlebourne is using 4 to 5 bulls in a mating year – one is generally not on Deer Select so that bulls offspring will naturally be disadvantaged – so please NOTE this.**

*Please note:* the eBV values in our catalogue are only comparable to other Wapiti herds.

### December 2024 Wapiti Official Across Herd Values for the 2021 males & females

Wapiti	Carcass wt	Eye muscle EMA	Weight 12 mths	Terminal Index	CARLA 10eBV
Top 2%	+12.4	+3.1	+23.5	+\$41	+159
Top 10%	+10.5	+2.49	+19.7	+\$35	+108
Top 25%	+9.0	+1.95	+16.8	+\$30	+67
Top 50%	+7.3	+1.36	+13.5	+\$25	+23

## 2025 Littlebourne Sale Bulls

Lot	Tag	Sire	CW Carcass Weight kg	EMA eBV	W12 Weight 12 mths kg	Terminal Index	CARLA 10 eBV	2 yr old velvet kg	3 yr old velvet kg
1	Orange 22	Niwa	+7.4	+2.5	+14.51	+\$26.62	+40.25	6.1 kg	6.8 kg
2	Orange 89	Blue 15	+7.7	+1.37	+13.95	+\$27.77	+59.15	5.0 kg	5.8kg
3	Orange 41	Niwa	+10.5	+0.45	+20.71	+\$32.23	+227.63	6.2 kg	11 kg
4	Orange 31	Niwa	+9.1	+1.96	+19.7	+\$32.46	+141.76	4.7 kg	6.2 kg
5	Orange 87	Niwa	+9.2	+1.96	+19.8	+\$30.02	+32	5.7 kg	7.5 kg
6	Orange 16	Prophecy	+8.4	+1.97	+16.8	+\$30.01	+5	10.6 kg	13.8 kg
7	Orange 46	Yellow 24	+7.9	+1.99	+16.8	+\$28.20	+77.89	6.7 kg	8.5 kg
8	Orange 30	Niwa	+7.8	+1.95	+14.9	+\$28.03	+182.41	4.4 kg	4.9 kg
9	Orange 88	Niwa	+8.1	+1.38	+19.9	+\$27.11	+93.92	7.0 kg	9.4 kg
10	Orange 86	Niwa	+7.5	+0.97	+13.64	+\$25.30	+31.45	5.9 kg	6.4 kg
11	Orange 70	Niwa	+9.1	+1.78	+16.9	+\$30.42	+67.41	4.2 kg	5.2 kg
12	Orange 60	Prophecy	+7.7	+0.60	+19.8	+\$26.47	+145.43	4.9 kg	7.7 kg
13	Orange 13	Niwa	+7.4	+1.99	+13.6	+\$26.82	+232.60	5.6 kg	7.1 kg
14	Orange 21	Prophecy	+7.3	+1.38	+13.7	+\$25.72	+23.22	6.1 kg	11.7 kg
15	Orange 69	Niwa	+6.2	+1.37	+10.7	+\$22.21	+37.79	4.3 kg	6.5kg
16	Orange 76	Blue 15	+7.4	+0.67	+13.6	+\$21.01	+94.52	6 kg	6.4 kg
17	Orange 80	Niwa	+6.2	+1.39	+10.5	+\$25.04	+15.04	4.1 kg	5.6 kg
18	Orange 85	Blue 15	+6.7	+0.89	+9.4	+\$25.01	+75.42	4.7 kg	6.0 kg
19	Orange 58	Prophecy	+5.2	+0.07	+10.4	+\$19.21	-4	4.7 kg	6.1 kg
20	Orange 72	Niwa	+7.4	+1.60	+13.7	+\$26.41	+108	4.0 kg	4.6 kg
Top 2%			kgs	cm <sup>2</sup>	kgs	\$Hind		kg	kg
Top 10%									
Top 25%									
Top 50%									



**YOU NEED  
THE BEST.  
TO LOOK AFTER  
THE BEST.**

**When it comes to the transport of stud livestock  
you can't go past Downlands Deer and Studstock.**

During the past 30 years, we have pioneered the way in studstock transportation with purpose built trucks, calm expert livestock handlers, efficient nationwide transport routing and now with visual tracking from pick up to delivery.

Talk to Downlands Deer and Studstock today to ensure your livestock arrives in the best condition possible.



0800 163 013

[office@downlandsdeer.co.nz](mailto:office@downlandsdeer.co.nz)

[www.downlandsdeer.co.nz](http://www.downlandsdeer.co.nz)





VetSouth



**Working with you**  
for happy, healthy &  
productive animals.

0800 VETSOUTH [www.vetsouth.co.nz](http://www.vetsouth.co.nz)

WINTON INVERCARGILL GORE BALCLUTHA TAPANUI OTAUTAU LUMSDEN CLYDEVALE

*VetSouth are proud to support*  
**LITTLEBOURNE FARM**

# LOT 1

Vendor:  
Littlebourne Farm Ltd, Devereaux Road No 2 R.D. Winton

## NEW ZEALAND WAPITI BULL

### Aged: 3 years

Bred from Vendor



TAG NO:  
**ORANGE 22**

SIRE:  
NIWA

Full brother to Crikey.  
Top 10% Carla, top 10% EMA,  
top 2% velvet, top 10% terminal.  
2yr velvet=7.9kg 3yr velvet=11.4kg  
4yr velvet=15.1kg  
5yr velvet (2nd velvet awards)  
6yr velvet=21.3kg (3rd velvet awards)

DAM:  
PURPLE 49

ISOBAR

970/09

GREEN 68

WHITE 55

PERFORMANCE DATA			VELVET		
Weight on	28-02-22	94 kg			
Weight on	01-05-22	118 kg			
Weight on	16-08-22	140 kg	2023	6.9 kg	20 cm
Weight on	25-11-22	189 kg	2024	6.9 kg	21 cm
Weight at	36 months	292 kg			
Growth Rate - Birth to 12 months <b>463</b> grams per day					

### COMMENTS:

*Our top EMA in the sale. Always pleasing is the feedback of clients that expectation is being exceeded. Focus on growth rate improvement as a priority and turn extra grams per day into extra dollars.*

SALE WEIGHT: ..... PRICE: .....

**PEDIGREE      PRODUCTION      PROFIT**

# LOT 2

Vendor:  
Littlebourne Farm Ltd, Devereaux Road No 2 R.D. Winton

## NEW ZEALAND WAPITI BULL

### Aged: 3 years

Bred from Vendor



TAG NO:  
**ORANGE 89**

SIRE:  
**BLUE 15**

A mojo son.

DAM:  
**LB 93/14**

**MOJO**

Winner 4yr Velvet Comp  
NZ Open Elk/Wapiti  
Comp 2013-14 22.63kg

**BLUE 11**

**YELLOW 36**

**GREEN 30**

PERFORMANCE DATA			VELVET		
Weight on	28-02-22	86 kg			
Weight on	01-05-22	122 kg			
Weight on	16-08-22	152 kg	2023	5.0 kg	18 cm
Weight on	25-11-22	195 kg	2024	5.8 kg	19 cm
Weight at	36 months	306 kg			
Growth Rate - Birth to 12 months <b>478</b> grams per day					

### COMMENTS:

*A sustainable future for your deer enterprise. Grow your wealth. Every year our sales span NZ. Become a repeat client.*

SALE WEIGHT: ..... PRICE: .....

**PEDIGREE      PRODUCTION      PROFIT**

## NEW ZEALAND WAPITI BULL

## Aged: 3 years

Bred from Vendor



TAG NO:  
**ORANGE 41**

SIRE:

**NIWA**

Full brother to Crikey.  
Top 10% Carla, top 10% EMA,  
top 2% velvet, top 10% terminal.  
2yr velvet=7.9kg 3yr velvet=11.4kg  
4yr velvet=15.1kg  
5yr velvet (2nd velvet awards)  
6yr velvet=21.3kg (3rd velvet awards)

DAM:

**WHITE 32**

ISOBAR

970/09

R 83

2nd in Natural Open Class

LB 2

PERFORMANCE DATA			VELVET		
Weight on	28-02-22	88 kg			
Weight on	01-05-22	112 kg			
Weight on	16-08-22	153 kg	2023	6.2 kg	20 cm
Weight on	25-11-22	193 kg	2024	11 kg	25 cm
Weight at	36 months	320 kg			
Growth Rate - Birth to 12 months <b>480</b> grams per day					

Orange 41 is was used as a sire in the 2024 season. He has 10 fawns on the ground.

### COMMENTS:

Top 2% in Carla, top 5% W12. Highest in sale catalogue for carcass wt. Used as a backup and has fawns on the ground. Highly recommended.

SALE WEIGHT: ..... PRICE: .....

**PEDIGREE      PRODUCTION      PROFIT**



# **FLASH**AGRI



**Graham Gordon**

**Mobile** 027 451 5581 | **A/H** 03 236 1065

**Email** [flashagri@xtra.co.nz](mailto:flashagri@xtra.co.nz)

141 Winton-Lorneville Highway, RD1 Winton 9781

# LOT 4

Vendor:  
Littlebourne Farm Ltd, Devereaux Road No 2 R.D. Winton

## NEW ZEALAND WAPITI BULL

### Aged: 3 years

Bred from Vendor



TAG NO:  
**ORANGE 31**

SIRE:  
NIWA

Full brother to Crikey.  
Top 10% Carla, top 10% EMA,  
top 2% velvet, top 10% terminal.  
2yr velvet=7.9kg 3yr velvet=11.4kg  
4yr velvet=15.1kg  
5yr velvet (2nd velvet awards)  
6yr velvet=21.3kg (3rd velvet awards)

DAM:  
PURPLE 1

ISOBAR

970/09

BLUE 15

Mojo son.

GREEN 72

PERFORMANCE DATA			VELVET		
Weight on	28-02-22	93 kg			
Weight on	01-05-22	120 kg			
Weight on	16-08-22	153 kg	2023	4.7 kg	16 cm
Weight on	25-11-22	193 kg	2024	6.2 kg	20 cm
Weight at	36 months	332 kg			
Growth Rate - Birth to 12 months <b>477</b> grams per day					

### COMMENTS:

Top 5% in Carla. Who doesn't want to drench less. Top 10% for W12. What more can I say? Buy with confidence.

SALE WEIGHT: ..... PRICE: .....

**PEDIGREE      PRODUCTION      PROFIT**

# LOT 5

Vendor:  
Littlebourne Farm Ltd, Devereaux Road No 2 R.D. Winton

## NEW ZEALAND WAPITI BULL

**Aged: 3 years**

**Bred from Vendor**



TAG NO:  
**ORANGE 87**

SIRE:  
**NIWA**

Full brother to Crikey.  
Top 10% Carla, top 10% EMA,  
top 2% velvet, top 10% terminal.  
2yr velvet=7.9kg 3yr velvet=11.4kg  
4yr velvet=15.1kg  
5yr velvet (2nd velvet awards)  
6yr velvet=21.3kg (3rd velvet awards)

DAM:  
**PURPLE 51**

ISOBAR

**970/09**

**GREEN 68**

Mojo grandson +  
Supremium background.  
3yr velvet 10.4kg. Over  
500g/day birth to 12mths  
**64/07**

PERFORMANCE DATA			VELVET		
Weight on	28-02-22	98 kg			
Weight on	01-05-22	127 kg			
Weight on	16-08-22	158 kg	2023	5.7 kg	18 cm
Weight on	25-11-22	207 kg	2024	7.5 kg	21 cm
Weight at	36 months	335 kg			
Growth Rate - Birth to 12 months <b>512</b> grams per day					

### COMMENTS:

*Top 10% for W12. Look at the awesome grams per day growth rate. Progeny of Orange 27 will generate superior returns. The right product at the right time. Competitively position your business for a positive future.*

SALE WEIGHT: ..... PRICE: .....

**PEDIGREE      PRODUCTION      PROFIT**

# A STAR OFFERING

## LOT 6

Vendor:  
Littlebourne Farm Ltd, Devereaux Road No 2 R.D. Winton

### NEW ZEALAND WAPITI BULL

### Aged: 3 years

Bred from Vendor



TAG NO:  
**ORANGE 16**

SIRE:  
**PROPHECY**

Top all-round on deer select  
EMA, W12, Terminal Index.  
2yr velvet=10.9kg  
3yr velvet=15.7kg  
(won 3yr Elk/Wapiti comp.)  
4yr velvet=21.5kg (NZ Record)

DAM:  
**BLACK 18**

FORECASTER

W12eBV + 2104  
18kg velvet at 5yrs

318/13

LIGHT BLUE 72

Top velvetor + Top  
growth rate a Mojo son.

LB5

PERFORMANCE DATA			VELVET		
Weight on	28-02-22	99 kg			
Weight on	01-05-22	129 kg			
Weight on	16-08-22	148 kg	2023	10.6 kg	21 cm
Weight on	25-11-22	200 kg	2024	13.8 kg	23 cm
Weight at	36 months	350 kg			
Growth Rate - Birth to 12 months <b>488</b> grams per day					

Orange 16 is was used as a sire in the 2024 season. He has 24 fawns on the ground.

#### COMMENTS:

The star lot. The top animal for velvet. Look at that 2 + 3 years velvet weight. Outstanding! 3rd in 2yr velvet awards. Top all-round. will be top trophy potential. Used over our 40MA hinds, got 38 early pregnant. Eye muscles top 25% also. Big strong stag

SALE WEIGHT: ..... PRICE: .....

**PEDIGREE      PRODUCTION      PROFIT**

# PROUD TO SUPPORT LITTLEBOURNE FARM



Buy online... [www.hawkervelvet.com](http://www.hawkervelvet.com)

**Nathan Hawker**

Deer Velvet & Antler Buyer

**021 501 563**

[nathanhawker@xtra.co.nz](mailto:nathanhawker@xtra.co.nz)





# LOT 7

Vendor:  
Littlebourne Farm Ltd, Devereaux Road No 2 R.D. Winton

## NEW ZEALAND WAPITI BULL

**Aged: 3 years**

Bred from Vendor



TAG NO:  
**ORANGE 46**

SIRE:  
**YELLOW 24**

DAM:  
**YELLOW 2**

**BLUE 5**

Mojo son.

**BLACK 26**

**CRIKEY**

Full brother to NIWA.

**GREEN 53**

PERFORMANCE DATA			VELVET		
Weight on	28-02-22	84 kg	2023	6.0 kg	18 cm
Weight on	01-05-22	110 kg			
Weight on	16-08-22	145 kg			
Weight on	25-11-22	182 kg			
Weight at	36 months	315 kg			
2024					
				6.4 kg	20 cm
Growth Rate - Birth to 12 months <b>456</b> grams per day					

### COMMENTS:

*A maidens fawn. Great weight gains, consistent performance underpins the prospect of greater returns.*

SALE WEIGHT: ..... PRICE: .....

**PEDIGREE      PRODUCTION      PROFIT**

# PROPHECY

SIRE OF 4 LOTS IN THIS YEAR'S CATALOGUE



## VELVET

2 year 10.9kg EW Supreme  
3 year 15.7kg EW Supreme

4 year 21.5kg EW Supreme  
(NZ record for age)

*So top 2% for velvet. Top 2% for conception date so gets them pregnant early. Top 10% for eye muscle. A top all-rounder.*

**PEDIGREE**

**PRODUCTION**

**PROFIT**

# ORANGE 16

3YR OLD WINNER OF NATIONAL VELVET COMPETITION

## THE STAR LOT



*2yr old velvet of Orange 16*



*3yr old velvet of Orange 16*

*Orange 16 is a top velveter and a top trophy prospect.  
Orange 16 is was used as a sire in the 2024 season.  
He has 24 fawns on the ground.*

**PEDIGREE**

**PRODUCTION**

**PROFIT**

# LOT 8

Vendor:  
Littlebourne Farm Ltd, Devereaux Road No 2 R.D. Winton

## NEW ZEALAND WAPITI BULL

**Aged: 3 years**

Bred from Vendor



TAG NO:  
**ORANGE 30**

SIRE:  
NIWA

Full brother to Crikey.  
Top 10% Carla, top 10% EMA,  
top 2% velvet, top 10% terminal.  
2yr velvet=7.9kg 3yr velvet=11.4kg  
4yr velvet=15.1kg  
5yr velvet (2nd velvet awards)  
6yr velvet=21.3kg (3rd velvet awards)

DAM:  
LB32

Our 2nd ranked hind on  
DeerSelect for W12, 3rd  
Terminal index and in top  
5% Carla.

ISOBAR

970/09

92

RED 65

Top carla

PERFORMANCE DATA			VELVET		
Weight on	28-02-22	92 kg			
Weight on	01-05-22	117 kg			
Weight on	16-08-22	156 kg	2023	4.4 kg	16 cm
Weight on	25-11-22	180 kg	2024	4.9 kg	18 cm
Weight at	36 months	300 kg			
Growth Rate - Birth to 12 months <b>441</b> grams per day					

### COMMENTS:

Orange 30 is out of our 2nd best hind. Top 2% Carla. Medium size stag for your maidens. Highly recommended.

SALE WEIGHT: ..... PRICE: .....

**PEDIGREE      PRODUCTION      PROFIT**

# LOT 9

Vendor:  
Littlebourne Farm Ltd, Devereaux Road No 2 R.D. Winton

## NEW ZEALAND WAPITI BULL

### Aged: 3 years

Bred from Vendor



TAG NO:  
**ORANGE 88**

SIRE:  
NIWA

Full brother to Crikey.  
Top 10% Carla, top 10% EMA,  
top 2% velvet, top 10% terminal  
2yr velvet=7.9kg 3yr velvet=11.4kg  
4yr velvet=15.1kg  
5yr velvet (2nd velvet awards)  
6yr velvet=21.3kg (3rd velvet awards)

DAM:  
PURPLE 9

ISOBAR

970/09

WHITE 63

Top velveter + EMA

GREEN 24

PERFORMANCE DATA			VELVET		
Weight on	28-02-22	94 kg			
Weight on	01-05-22	116 kg			
Weight on	16-08-22	152 kg	2023	7.0 kg	21 cm
Weight on	25-11-22	205 kg	2024	9.4 kg	25 cm
Weight at	36 months	337 kg			
Growth Rate - Birth to 12 months <b>504</b> grams per day					

### COMMENTS:

*Another top growth rate animal. Top 10% in W12, top 10% in Carla. Very good as well. A top all-rounder.*

SALE WEIGHT: ..... PRICE: .....

**PEDIGREE      PRODUCTION      PROFIT**



# LOT 10

Vendor:  
Littlebourne Farm Ltd, Devereaux Road No 2 R.D. Winton

## NEW ZEALAND WAPITI BULL

### Aged: 3 years

Bred from Vendor



TAG NO:  
**ORANGE 86**

SIRE:  
NIWA

Full brother to Crikey.  
Top 10% Carla, top 10% EMA,  
top 2% velvet, top 10% terminal.  
2yr velvet=7.9kg 3yr velvet=11.4kg  
4yr velvet=15.1kg  
5yr velvet (2nd velvet awards)  
6yr velvet=21.3kg (3rd velvet awards)

DAM:

ISOBAR

970/09

PERFORMANCE DATA			VELVET		
Weight on	28-02-22	91 kg			
Weight on	01-05-22	119 kg			
Weight on	16-08-22	154 kg	2023	5.9 kg	18 cm
Weight on	25-11-22	180 kg	2024	6.4 kg	21 cm
Weight at	36 months	316 kg			
Growth Rate - Birth to 12 months <b>441</b> grams per day					

### COMMENTS:

*An ideal starter kit for those wishing to increase production from hybrid or red hinds.  
Low birth weights and hybrid vigour the key to success.*

SALE WEIGHT: ..... PRICE: .....

**PEDIGREE      PRODUCTION      PROFIT**

# LOT 11

Vendor:  
Littlebourne Farm Ltd, Devereaux Road No 2 R.D. Winton

## NEW ZEALAND WAPITI BULL

**Aged: 3 years**

Bred from Vendor



TAG NO:  
**ORANGE 70**

SIRE:  
NIWA

Full brother to Crikey.  
Top 10% Carla, top 10% EMA,  
top 2% velvet, top 10% terminal.  
2yr velvet=7.9kg 3yr velvet=11.4kg  
4yr velvet=15.1kg  
5yr velvet (2nd velvet awards)  
6yr velvet=21.3kg (3rd velvet awards)

DAM:  
YELLOW 72

ISOBAR

970/09

BLUE 15

WHITE 20

PERFORMANCE DATA			VELVET		
Weight on	28-02-22	79 kg			
Weight on	01-05-22	106 kg			
Weight on	16-08-22	130 kg	2023	4.2 kg	16 cm
Weight on	25-11-22	184 kg	2024	5.2 kg	18 cm
Weight at	36 months	304 kg			
Growth Rate - Birth to 12 months <b>457</b> grams per day					

### COMMENTS:

Top 25% weight 12 mth, Carla and 3rd best in carcass weight in sale stags. Top all rounder. A first calvers fawn.

SALE WEIGHT: ..... PRICE: .....

**PEDIGREE      PRODUCTION      PROFIT**



**'YOUR SEED AND FEED SPECIALISTS'**

# QUALITY DEER FEED MANUFACTURERS

**GMO FREE since January 2019**

**Velveter Deer Nuts**

19% Protein  
13% ME

**Finisher Deer Nuts**

15.5% Protein  
13% ME

**Basic Deer Nuts**

12.5% Protein  
13% ME

**THE RESULTS SPEAK FOR THEMSELVES...**



**0800 621 431**  
**55 Annan Street West, Invercargill**



**PEDIGREE      PRODUCTION      PROFIT**

# LOT 12

Vendor:  
Littlebourne Farm Ltd, Devereaux Road No 2 R.D. Winton

## NEW ZEALAND WAPITI BULL

**Aged: 3 years**

Bred from Vendor



TAG NO:  
**ORANGE 60**

SIRE:

DAM:  
**BLACK 56**

Our top Carla hind. Top 2%

LB 72

Mojo son.  
Top growth rate.

WHITE 47

PERFORMANCE DATA			VELVET		
Weight on	28-02-22	81 kg			
Weight on	01-05-22	110 kg			
Weight on	16-08-22	139 kg	2023	4.9 kg	18 cm
Weight on	25-11-22	191 kg	2024	7.7 kg	19 cm
Weight at	36 months	337 kg			
Growth Rate - Birth to 12 months <b>489</b> grams per day					

### COMMENTS:

*Orange 60 mother highest Carla in NZ; top 2% Carla. Top 10% W12. Just a top all-rounder. Look at that growth rate.*

SALE WEIGHT: ..... PRICE: .....

**PEDIGREE      PRODUCTION      PROFIT**

# LOT 13

Vendor:  
Littlebourne Farm Ltd, Devereaux Road No 2 R.D. Winton

## NEW ZEALAND WAPITI BULL

**Aged: 3 years**

Bred from Vendor



TAG NO:  
**ORANGE 13**

SIRE:  
NIWA

Full brother to Crikey.  
Top 10% Carla, top 10% EMA,  
top 2% velvet, top 10% terminal.  
2yr velvet=7.9kg 3yr velvet=11.4kg  
4yr velvet=15.1kg  
5yr velvet (2nd velvet awards)  
6yr velvet=21.3kg (3rd velvet awards)

DAM:  
RED 6

ISOBAR

970/09

W 12

Top EMA + top  
velveter. Top 2% in  
both traits

LB 33

PERFORMANCE DATA			VELVET		
Weight on	28-02-22	91 kg			
Weight on	01-05-22	117 kg			
Weight on	16-08-22	138 kg	2023	5.6 kg	17 cm
Weight on	25-11-22	197 kg	2024	7.1 kg	21 cm
Weight at	36 months	306 kg			
Growth Rate - Birth to 12 months <b>477</b> grams per day					

### COMMENTS:

*Our top Carla, in the top 2%, top 25% for Eye Muscle. Buy with confidence this stag will help you make more money without too much outlay.*

SALE WEIGHT: ..... PRICE: .....

**PEDIGREE      PRODUCTION      PROFIT**

# LOT 14

Vendor:  
Littlebourne Farm Ltd, Devereaux Road No 2 R.D. Winton

## NEW ZEALAND WAPITI BULL

**Aged: 3 years**

Bred from Vendor

**3YR OLD 2<sup>ND</sup> PLACE  
NATIONAL VELVET COMPETITION**



TAG NO:  
**ORANGE 21**

SIRE:  
**PROPHECY**

Top all-round on deer select  
EMA, W12, Terminal Index.  
2yr velvet=10.9kg  
3yr velvet=15.7kg  
(won 3yr Elk/Wapiti comp.)  
4yr velvet=21.5kg (NZ Record)

DAM:

FORECASTER

W12eBV + 2104  
18kg velvet at 5yrs

318/13

PERFORMANCE DATA			VELVET		
Weight on	28-02-22	96 kg			
Weight on	01-05-22	119 kg			
Weight on	16-08-22	149 kg	2023	6.1 kg	20 cm
Weight on	25-11-22	198 kg	2024	11.7 kg	23 cm
Weight at	36 months	325 kg			
Growth Rate - Birth to 12 months <b>485</b> grams per day					

### COMMENTS:

*Littlebourne Wapiti values include enterprise, integrity, and respect. Your business must be profitable. Our sale animals demonstrate these values and will contribute to your success.*

SALE WEIGHT: ..... PRICE: .....

**PEDIGREE      PRODUCTION      PROFIT**



# Servicing all aspects of the deer industry.

*Contact your local Deer Specialist*

**TONY COCHRANE**

National Deer & Velvet Manager  
0275 918 438  
tcochrane@pggwrightson.co.nz

**STEVE ANNAN**

National Stud & North Island  
Deer Coordinator  
027 215 6671  
steven.annan@pggwrightson.co.nz

**MURRAY COUTTS**

Mid & South Canterbury  
0274 039 377  
mcoutts@pggwrightson.co.nz

**LUKE THOMPSON**

Central & North Canterbury,  
Marlborough & West Coast  
0273 083 426  
luke.thompson@pggwrightson.co.nz

**JOHN WILLIAMS**

Otago  
0272 414 179  
jwilliams@pggwrightson.co.nz

**BEN BEADLE**

Southland  
0277 281 052  
bbeadle@pggwrightson.co.nz



[fb.com/pgwlivestock](https://fb.com/pgwlivestock)  
[instagram.com/pgwlivestock](https://instagram.com/pgwlivestock)

Freephone 0800 2466 5463  
[www.agonline.co.nz](http://www.agonline.co.nz)



**SCAN ME**  
to find a rep

# LOT 15

Vendor:  
Littlebourne Farm Ltd, Devereaux Road No 2 R.D. Winton

## NEW ZEALAND WAPITI BULL

**Aged: 3 years**

Bred from Vendor



TAG NO:  
**ORANGE 69**

SIRE:

**NIWA**

Full brother to Crikey.  
Top 10% Carla, top 10% EMA,  
top 2% velvet, top 10% terminal.  
2yr velvet=7.9kg 3yr velvet=11.4kg  
4yr velvet=15.1kg  
5yr velvet (2nd velvet awards)  
6yr velvet=21.3kg (3rd velvet awards)

DAM:

**YELLOW 1**

ISOBAR

970/09

**CRIKEY**

A Top All-rounder

PERFORMANCE DATA			VELVET		
Weight on	28-02-22	79 kg			
Weight on	01-05-22	108 kg			
Weight on	16-08-22	135 kg	2023	4.3 kg	18 cm
Weight on	25-11-22	162 kg	2024	6.5 kg	19 cm
Weight at	36 months	280 kg			
Growth Rate - Birth to 12 months <b>412</b> grams per day					

### COMMENTS:

*A maidens fawn. Our answer to Livestock Improvement. 100kg fawn by 6mths. We gain credibility by delivering on performance. Ask our repeat customers.*

SALE WEIGHT: ..... PRICE: .....

**PEDIGREE      PRODUCTION      PROFIT**

# LOT 16

Vendor:  
Littlebourne Farm Ltd, Devereaux Road No 2 R.D. Winton

## NEW ZEALAND WAPITI BULL

**Aged: 3 years**

Bred from Vendor



TAG NO:  
**ORANGE 76**

SIRE:  
**BLUE 15**

Mojo son.

DAM:  
**PURPLE 73**

**MOJO**

Winner 4yr Velvet Comp  
Winner Open Elk/Wapiti  
2013-14 22.63kg

**BLUE 11**

**CRIKEY**

A Top All-rounder

PERFORMANCE DATA			VELVET		
Weight on	28-02-22	85 kg			
Weight on	01-05-22	kg			
Weight on	16-08-22	140 kg	2023	7.0 kg	18 cm
Weight on	25-11-22	182 kg	2024	5.8 kg	18 cm
Weight at	36 months	304 kg			
Growth Rate - Birth to 12 months <b>473</b> grams per day					

### COMMENTS:

*The right asset mix for the next decade. Great value, very good weight gains throughout his life. A gilt edged investment.*

SALE WEIGHT: ..... PRICE: .....

**PEDIGREE      PRODUCTION      PROFIT**

# LOT 17

Vendor:  
Littlebourne Farm Ltd, Devereaux Road No 2 R.D. Winton

## NEW ZEALAND WAPITI BULL

**Aged: 3 years**

**Bred from Vendor**



TAG NO:  
**ORANGE 80**

SIRE:  
NIWA

Full brother to Crikey.  
Top 10% Carla, top 10% EMA,  
top 2% velvet, top 10% terminal.  
2yr velvet=7.9kg 3yr velvet=11.4kg  
4yr velvet=15.1kg  
5yr velvet (2nd velvet awards)  
6yr velvet=21.3kg (3rd velvet awards)

DAM:  
RED 36

ISOBAR

970/09

THE DUKE

Son of Mayfield Majic.  
5yr live weight=419kg  
3yr velvet=9kg  
5yr velvet=18.4kg

YELLOW 77/09

PERFORMANCE DATA			VELVET		
Weight on	28-02-22	83 kg			
Weight on	01-05-22	110 kg			
Weight on	16-08-22	135 kg	2023	4.1 kg	18 cm
Weight on	25-11-22	178 kg	2024	5.6 kg	20 cm
Weight at	36 months	290 kg			
Growth Rate - Birth to 12 months <b>460</b> grams per day					

### COMMENTS:

*A good all-round. Will work well with your red hinds to get to the Elk USA market.*

SALE WEIGHT: ..... PRICE: .....

**PEDIGREE      PRODUCTION      PROFIT**

# Trusted by thousands of Southland farmers, for over 70 years.

---

Leading the industry in **Business Advisory** and **Chartered Accountancy** services for the **Southland rural sector**, we've proven our dedication to delivering exceptional results throughout our firm's long history, striving to put **time, mind and money** back in our clients' hands



**More than just  
accounting.**

---

→ [McIntyreDick.co.nz](https://McIntyreDick.co.nz) → 03 211 0801 → 160 Spey Street, Invercargill 9810

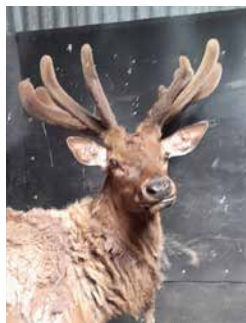
# LOT 18

Vendor:  
Littlebourne Farm Ltd, Devereaux Road No 2 R.D. Winton

## NEW ZEALAND WAPITI BULL

### Aged: 3 years

Bred from Vendor



TAG NO:  
**ORANGE 85**

SIRE:  
**BLUE 15**

Mojo son

DAM:  
**GREEN P93/14**

**MOJO**

Winner 4yr Velvet Comp  
Winner Open Elk/Wapiti  
2013-14 22.63kg

**BLUE 11**

**LB 60**

Top growth rate.  
EMA top 5

**YELLOW 8**

PERFORMANCE DATA			VELVET		
Weight on	28-02-22	89 kg	2023	4.7 kg	28 cm
Weight on	01-05-22	115 kg			
Weight on	16-08-22	138 kg			
Weight on	25-11-22	177 kg			
Weight at	36 months	278 kg			
Growth Rate - Birth to 12 months <b>424</b> grams per day					

### COMMENTS:

*Good Carla - less drenching.*

*Take a leading position in the profitable development of your herd. Cross this stag with your hinds for a win-win situation.*

SALE WEIGHT: ..... PRICE: .....

**PEDIGREE      PRODUCTION      PROFIT**



# LOT 19

Vendor:  
Littlebourne Farm Ltd, Devereaux Road No 2 R.D. Winton

## NEW ZEALAND WAPITI BULL

### Aged: 3 years

Bred from Vendor



TAG NO:  
**ORANGE 58**

SIRE:  
**PROPHECY**

Top all-round on deer select  
EMA, W12, Terminal Index.  
2yr velvet=10.9kg  
3yr velvet=15.7kg  
(won 3yr Elk/Wapiti comp.)  
4yr velvet=21.5kg (NZ Record)

DAM:  
**Y 92/16**

FORECASTER

W12eBV + 2104  
18kg velvet at 5yrs

**318/13**

**LB 72**

Mojo son.  
Top growth rate.

**LB 30**

PERFORMANCE DATA			VELVET		
Weight on	28-02-22	80 kg			
Weight on	01-05-22	110 kg			
Weight on	16-08-22	1130kg	2023	4.7 kg	16 cm
Weight on	25-11-22	178 kg	2024	6.1 kg	18 cm
Weight at	36 months	326 kg			
Growth Rate - Birth to 12 months <b>450</b> grams per day					

### COMMENTS:

*The prospect of stronger markets is the reward for the commitment and resilience and dedication of deer farmers. Orange 58 has the background to deliver.*

SALE WEIGHT: ..... PRICE: .....

**PEDIGREE      PRODUCTION      PROFIT**

# LOT 20

Vendor:  
Littlebourne Farm Ltd, Devereaux Road No 2 R.D. Winton

## NEW ZEALAND WAPITI BULL

**Aged: 3 years**

Bred from Vendor



TAG NO:  
**ORANGE 72**

SIRE:

970/09

DAM:  
**BLUE 6**

**ORANGE 66**

80/08

PERFORMANCE DATA			VELVET		
Weight on	28-02-22	81 kg			
Weight on	01-05-22	120 kg			
Weight on	16-08-22	130 kg	2023	4.0 kg	17 cm
Weight on	25-11-22	199 kg	2024	4.7 kg	18 cm
Weight at	36 months	305 kg			
Growth Rate - Birth to 12 months <b>519</b> grams per day					

### COMMENTS:

*An extremely quiet and friendly stag. A top growth rate at 519 g/day from birth to 12mths. By using highly effective grass converters, you are creating a better business by reducing costs, improving productivity, and developing a first class asset.*

SALE WEIGHT: ..... PRICE: .....

**PEDIGREE      PRODUCTION      PROFIT**

# BUYER'S DELIVERY INSTRUCTION SLIP

*(No verbal instructions can be accepted)*

Name .....

Address .....

.....

.....

Lots Purchased .....

..... Total No. ....

Consign to .....

.....

Account to .....

.....

Delivered to .....

.....

Insure For (state period) ..... Months.

Signature of Buyer .....



**ALLIANCE**

FARMERS' PRODUCE

SINCE 1948

## Unlock Premium Returns with Alliance's Exclusive Elk Supply Agreement

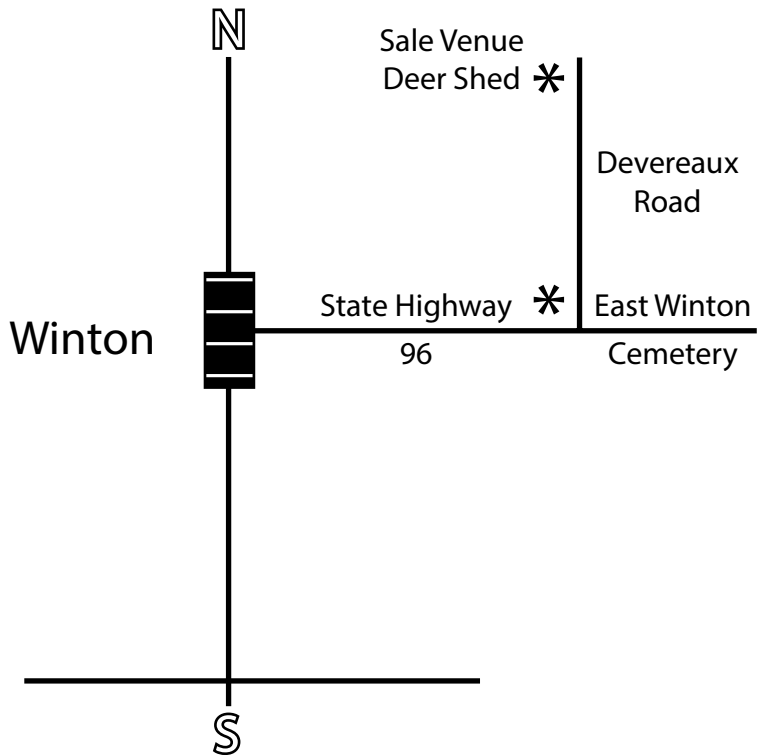
Take advantage of Alliance Group's exclusive Elk supply agreement, running from **2 December 2024 – 28 June 2025**. This agreement reflects the premium market demand for Elk (or hybrid)  
— Deer with at least 25% proven Elk genetics.

Secure premium returns for your high-quality Elk, backed by Alliance's strong market relationships and commitment to excellence.

By partnering with Alliance, you'll benefit from our market insights, tailored processing solutions, and competitive pricing.

Speak to an Alliance livestock representative today or contact our Service Centre:  
**0800 354 435 | [servicecentre@alliance.co.nz](mailto:servicecentre@alliance.co.nz)**





**PEDIGREE      PRODUCTION      PROFIT**