



Raincliff Station

AGRICULTURE
VENISON & ANTLER GENETICS

ANNUAL ELK/WAPITI TERMINAL SIRE SALE

Thursday 9th January 2025

Viewing from 9:30am | Sale by Auction 10:30am



bidr[®]

This sale will be hosted by bidr® (bidr.co.nz) as a HYBRID ON-FARM auction, with online bidding and a live-stream available for online purchasers.

All intending online purchasers must register with bidr® using an account held with one of the bidr® partner agencies in advance of the sale date.

The bidr® team is available to assist intending purchasers with signing up and registering – please call 0800 TO BIDR (0800 86 2437), or email enquiries@bidr.co.nz for assistance at any point.

Alternatively, contact your local bidr® representative:

Liam Beattie

General Manager
021 918 554

Bruno Santos

Upper North Island Territory Manager
027 221 8276

Olivia Manley

Lower North Island Territory Manager
027 348 6354

Mckenzie Alfeld

Upper South Island Territory Manager
027 341 8066

Sam Murphy

Lower South Island Territory Manager
027 243 2736

Bianca Perkins

Business Development Coordinator
027 732 0006

Foreword

Welcome to our 2025 on farm sale here at Raincliff. The Morgan family extend a warm welcome to you all.

Well, these years seem to roll around very fast and trying to get all the information and data put together for these catalogues always seems a real challenge at this busy time of year for deer farmers.

A lot has happened in the last 12 months, new government, interest rates easing and some decoupling of the regulations imposed on us over the last 6 years. I recently heard our PM speak at a FEDS function in Ashburton and I thought if he can achieve 2/3's of his plans it should put us back on the road to recovery.

Once again, the deer/venison industry is looking very positive and encouraging with the market strengthening on venison prices in newly developed markets, and existing. It is great to see Elk/Wapiti venison and velvet selling at premiums in these uncertain times. The Elk meat brand into North America is allowing farmers to grow these animals to their potential for 6-8 months of the year. I would like to thank John Sadler, Robert Miller and Kerry Whiting and the team from Mountain River.

This year we have what I would call a more Wapiti type animal. These animals have had no special treatment, very much in their working clothes. They will suit a buyer who does not want the bigger elk type, but an animal with a lower % of Elk genes.

These stags are of good sound structure, good bone and well fleshed throughout carcass. They are nice and quiet, and we are impressed with their weaning weights and spring growth rates.

We are very pleased with the continuous improvements to the stock we present to the commercial deer farmer who wants to capitalise on using a good all round terminal sire. We are particularly pleased with the way these animals have come through for this sale line up for January 2025, when we take into account the challenging long wet winter these animals had after weaning and given that their paddocks were washed out during the floods in 2022.

The continuous strive for improvement in our genetics that we are achieving is resulting in what I call the ideal terminal venison sire. In doing so, we are producing good solid animals with good bone structure, condition, temperament, doing ability and easily moved from here to their new farm environment.

The weight gain is what a commercial venison finisher is looking for to match the growth to meeting supply to the chilled venison market. With the current marker programmes from Mountain River using branded elk venison into selected customers around the world, giving us confidence to keep doing what we do. This is very exciting for us as Elk/Wapiti breeders as this will encourage (with good planning) to achieve greater returns from venison per hectare.

This is a great incentive to use Elk Terminal Sires to supply these niche markets. I encourage you to talk to Mountain River Processors which should give you confidence in using these great animals as a terminal sire.

I am a great believer in being market led. New Zealand farmed raised venison leads the way in this concept, but it will need continuous discipline between the marketers, processors and the farmer going forward if we are to improve on the current returns. I would encourage farmers to supply to the processors that are using the Cervena Brand. This is now a well-known brand in the market place, and is trusted by the end users, and potentially one of the best stories in the New Zealand protein market.

This year we welcome Neville Clark to run the auction on behalf of PGG Wrightson. I would like to take this opportunity to thank John Duffy who has conducted the auction with genuine passion, professionalism and commitment for the last 8 years, we wish him well for the future.

I would like to take this opportunity to thank family, friends, past and current staff members for their continued support throughout the twelve months. Any prospective clients are welcome to visit prior to sale day. Either call David or one of the agents on the back page of this catalogue. Wishing current and future purchasers a Merry Christmas and prosperous new year.

See you on the 9th of January 2025. Refreshments from 9am.

Kind Regards, David, Janet and Family.



Conditions of Sale

1. Sale will be conducted by PGG Wrightson, according to the NZ Stock and Stations Agents Association of Sale
2. Intending purchasers are required to register at the office to receive a buyer's number.
3. Each Lot shall become the property and responsibility of the purchaser when sale is declared.
4. Terms are cash unless prior arrangements have been made with PGG Wrightson.
5. Sale will be conducted GST exclusive.
6. Delivery instructions must be filled in and given to our clerks.
7. 4% commission to outside stock companies of independent introducing buyers prior to commencement of sale.

Disclaimer

All details and descriptions as to stock referred to in the catalogue have been supplied to PGG Wrightson, its employees and agents make no representations or warranties to acknowledgement of any kind whatsoever in relation to any part of this catalogue (including, but not limited to the accuracy or completeness of details and descriptions of stock and the information and other contents).

Purchasers, advisors and all other persons viewing or dealing with the stock must make their own assessment and judgement on the stock and the information in the catalogue.

PGG Wrightson, its employees and agents are not responsible or liable in any way whatsoever, whether in contract tort (Including negligence), or otherwise, to any person for any loss or damage whatsoever arising directly or indirectly from any information representation included in our omitted from the catalogue.

Transport

We are supplying transport with Downlands Deer, or ourselves throughout the south island. If this is not your preferred option please phone David Morgan to discuss options.

TB and Johnes

All Sales Bulls Paralisa Blood tested Johnes Negative. TB Status C10.

Grazing

Grazing is available for a limited period while making transport arrangements. All care and no responsibility.

Animal Health

All animals will have received cydectin injection, Hi-min oral drench and a 20 gram copper bullet when cutting regrowth prior to sale or prior to loading out to new purchaser. This we would recommend again post rut.

Guarantee

If a bull is proven to be sterile within 12 months of purchase it will be replaced by an animal of similar quality. This guarantee refers specifically to sterility and not to any condition due to accident or illness.

Bull Inspection

Prospective buyers are welcome to visit prior to sale day. Please make arrangements with either your livestock agent or directly with David Morgan. Inspection on the day is from 9:30am.

Insurance

Insurance facilities will be available on the day. Timaru FMG's team; Nick and Simon.

Refreshments

There will be morning tea and refreshments before the sale.

Growth Rates

You will notice we have put growth rates from birth, we do not tag or weigh at this time. We have put a normal birth weight in at 15kg and a nominal average birth date of 8th December. I would like to think this is a fair average.

Weights

We weaned this year's crop of Sale Stags early March 2022 and weighed, which is quite early for us. The next weigh was in October 2021 and then in December 2021. This gives us a good indication of their spring growth rate, turning grass into carcass weight. We are very pleased with the performance of this crop of yearlings at this stage.

We have continued to eye muscle scan all the yearling stock giving us another tool for selection criteria. We have also D.N.A all Elk/Wapiti stock on the farm to help improve future breeding decision, as to that you will notice we have done an Elk% for all Bulls for sale, which is run through Genometer and Genomnz Invermay.

Unable to make the sale?

Buy online on bidr® in 3 easy steps:

1

Sign up at **bidr.co.nz** and add your agency account under account details.

2

Browse auctions to find livestock you are interested in buying.

3

Login and register for the real time online auction to bid for the livestock you wish to purchase.

Our partner agencies:



Why use bidr®?

- Free to sign up
- Nationwide reach
- Bid from anywhere
- View auctions and sales results
- Pay for your purchases through your livestock agency account

Contact your bidr® Representative to sign up at **bidr.co.nz**

0800 TO BIDR



fb.com/bidrnz
instagram.com/bidrnz

Servicing all aspects of the deer industry.

Contact your local Deer Specialist

TONY COCHRANE

National Deer & Velvet Manager
0275 918 438
tcochrane@pggwrightson.co.nz

STEVE ANNAN

National Stud & North Island
Deer Coordinator
027 215 6671
steven.annan@pggwrightson.co.nz

MURRAY COUTTS

Mid & South Canterbury
0274 039 377
mcoutts@pggwrightson.co.nz

LUKE THOMPSON

Central & North Canterbury,
Marlborough & West Coast
0273 083 426
luke.thompson@pggwrightson.co.nz

JOHN WILLIAMS

Otago
0272 414 179
jwilliams@pggwrightson.co.nz

BEN BEADLE

Southland
0277 281 052
bbeadle@pggwrightson.co.nz



fb.com/pgwlivestock
instagram.com/pgwlivestock

Freephone 0800 2466 5463
www.agonline.co.nz



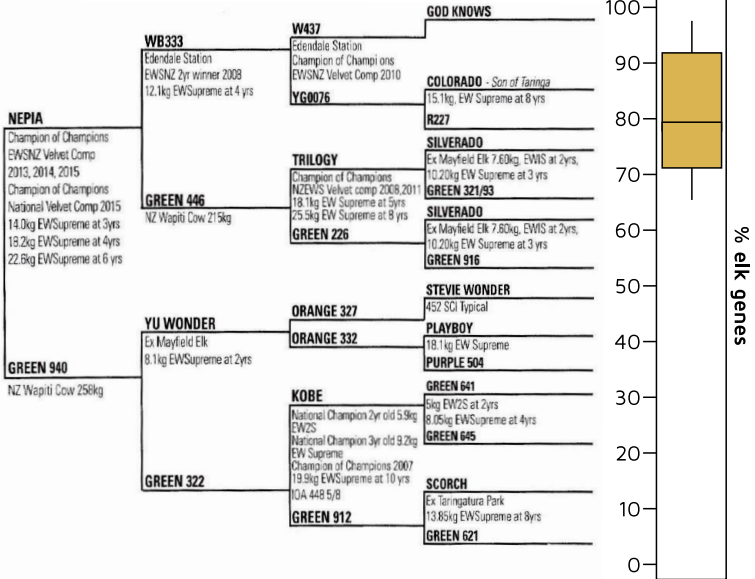
SCAN ME
to find a rep



Sire Reference: MUTU

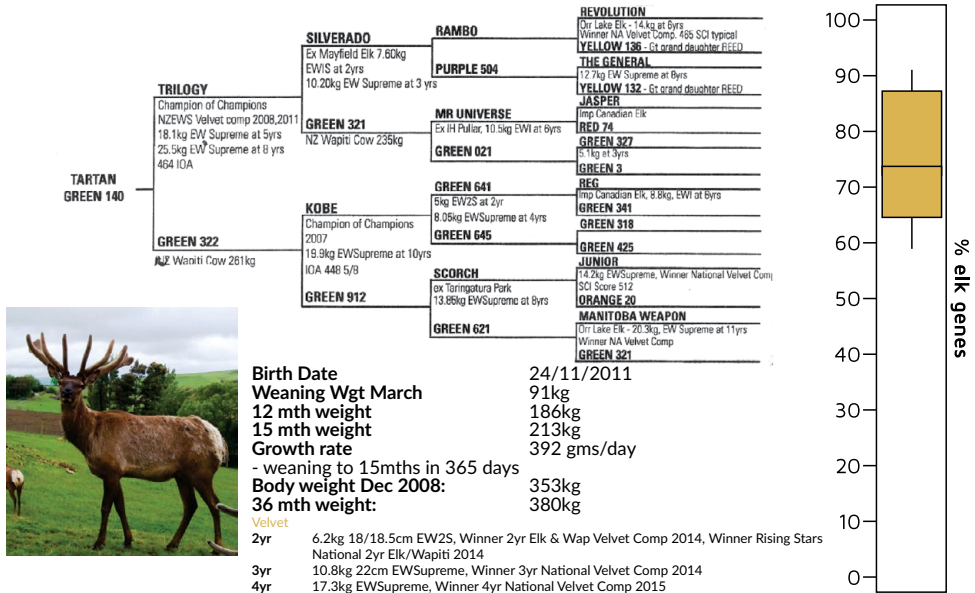
Genometer™

GENETIC MERIT			
TRAIT		VALUE	RANK (SCALE INCL)
VELVET	MVM+BV	+4.46	1
GROWTH	W12+BV	+14.14	2
CARCASS YIELD	EMAc+BV	+2.87	1
PARASITE PROTECTION	CARLA	+3.63	5



Sire Reference: TARTAN

Genometer™





XCELL

**BREEDING AND
VETERINARY SERVICES**

**SPECIALISTS IN
DEER REPRODUCTION**

**‘YOUR SUCCESS
IS OUR BUSINESS’**

**SUPPORTING THE
DEER INDUSTRY SINCE 1996**

Xcell Breeding and Veterinary Services

143 Rangiora Woodend Road, Woodend 7610,

North Canterbury **ph** 03 312 2191

www.xcell.co.nz



Raincliff Station

AGRICULTURE
VENISON & ANTLER GENETICS

2025 SALE ELKS

**CONSISTENT
QUALITY &
RELIABILITY**



2025 Sale Bulls

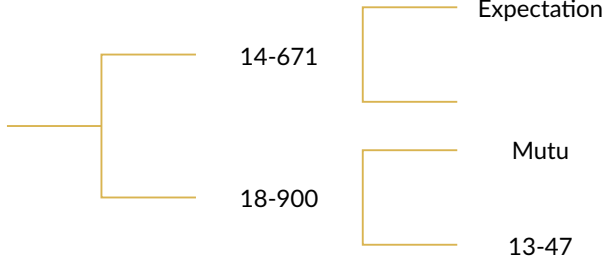
Lot #	Tag #	Weaning	Spring Growth Rate Oct-Dec 45 Days			3 Year Weight Dec 2022
			Oct	Dec	Grams Per Day	
Lot 01	21-639	93	139	185	1050	330
Lot 02	21-529	82	144	176	711	319
Lot 03	21-503	82	141	168	600	310
Lot 04	21-603	77	129	161	711	298
Lot 05	21-527	74	123	159	800	295
Lot 06	21-508	62	117	143	577	293
Lot 07	21-512	71	129	153	533	291
Lot 08	21-524	76	129	147	400	281
Lot 09	21-537	78	118	141	511	281
Lot 10	21-521	79	114	150	800	277
Lot 11	21-540	87	124	149	555	274
Lot 12	21-636	73	108	137	644	270
Lot 13	21-513	82	125	147	488	269
Lot 14	21-596	79	131	161	667	268
Lot 15	21-510	84	130	159	644	268
Lot 16	21-600	83	117	146	644	266
Lot 17	21-517	91	122	151.5	655	266
Lot 18	21-637	66	119	139	444	264
Lot 19	21-625	85	131	158	600	262
Lot 20	21-528	88	139	162	511	261
Lot 21	21-629	67	101	122	466	260
Lot 22	21-628	79	128	164	800	258
Lot 23	21-589	71	118	138	444	246
Lot 24	21-630	90.5	126	162.5	811	246
Lot 25	21-582	72	111	129.5	411	244
Lot 26	21-504	69	109	132	511	235
Lot 27	21-507	69	169.5	130	455	233
Lot 28	21-620	94	132	157	555	229
Lot 29	21-591	66	108	134	577	229
Lot 30	21-532	73	113	139	577	228

2025 Sale Bulls

Eye Muscle	Velvet 2 Yr	Velvet 3 Yr	Beam	Elk %	Sire	Dam
38-14	4.8	7.4	19	82.8%	14-671	18-900
30-75	2.55	3.95	15.5	75.3%	Green 1	16-165
38-10	3.6	6.1	18	80.8%	"Littlebourne Black 38"	17-335
41-20	3.8	5.6	17	72.1%	Green 1	19-744
32-61	4.2	5.85	20	76.3%	Mutu	14-770
39-25	3.3	5.7	18	76.4%	Mutu	11-24
36-65	2.95	4.2	16	74.6%	Green 1	14-758
32-93	2.95	3.7	15	77.3%	Green 1	13-46
34-17	2.75	4.15	15	75.4%	Green 1	14-763
36-95	2.55	3.95	16	79.3%	Mutu	14-767
29-73	2.3	3.1	15	79.2%	Green 1	13-54
33-59	2.3	4.05	16	78.8%	15-168	18-948
37-92	2.95	4.6	16	79.5%	15-168	14-403
30-89	3.8	5.2	17.5	82.0%	13-1	19-742
33-40	2.55	3.2	16	74.7%	Green 1	16-157
33-01	2.9	4.05	16	69.1%	Green 1	19-857
36-70	2.4	4.2	15	79.8%	"Littlebourne Black 38"	19-714
23-87	2.3	3.9	15	82.5%	"Littlebourne Black 38"	19-848
37-16	2.7	4.5	15	81.9%	Green 1	18-996
36-16	2.4	3.6	15	89.5%	Expectation	16-341
36-95	2.6	4.4	16	76.4%	15-168	18-1022
30-40	3.8	5.3	18	76.2%	"Littlebourne Black 38"	18-937
27-89	2.8	5.1	16.5	87.4%	Devon	19-829
33-65	2.55	3.95	15	79.3%	15-168	18-974
21-89	2.4	3.85	15	79.3%	Green 1	19-849
37-70	2.6	3.8	17.5	80.9%	Mutu	16-311
27-13	2.9	4.3	15.5	80.5%	Green 1	17-415
38-40	2.75	4.7	17	73.0%	15-168	18-931
38-10	3.2	4.45	16	85.3%	Devon	19-836
29-07	2.8	3.6	16.5	70.5%	Highest BV Spiker	14-17

Lot 1 - 639

21-639



gBreed

Elk 82.80%

Velvet

2 yr 4.80 kg
3 yr 7.40 kg
Beam 19.0 cm

Weaning Weight: 93 kg
Birth Year Growth Rate: 473 g/per day
October Weight: 139 kg
December Weight: 185 kg
45 Day Spring Growth Rate (Oct - Dec): 1050 g/per day
3 Year Weight: 330 kg
Eye Muscle Area: 38-14
Sale Day Weight:

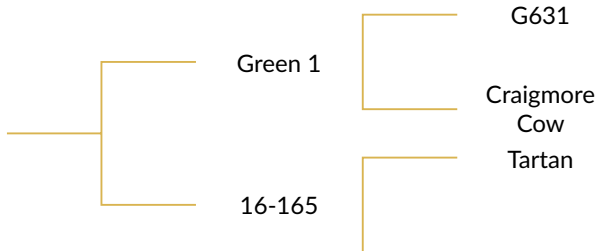


Comments:

Purchaser:
Price:

Lot 2 - 529

21-529



gBreed

Elk 75.30%

Velvet

2 yr 2.55 kg
3 yr 3.95 kg
Beam 15.5 cm

Weaning Weight: 82 kg
Birth Year Growth Rate: 447 g/per day
October Weight: 144 kg
December Weight: 176 kg
45 Day Spring Growth Rate (Oct - Dec): 711 g/per day
3 Year Weight: 319 kg
Eye Muscle Area: 30-75
Sale Day Weight:



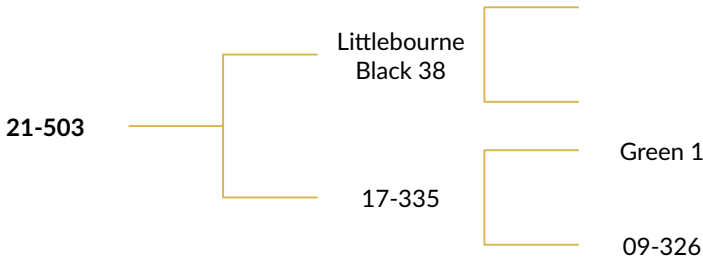
Comments:

Purchaser:
Price:

Lot 3-503

gBreed

Elk 80.80%



Velvet

2 yr 3.60 kg
3 yr 6.10 kg
Beam 18.0 cm

Weaning Weight: 82 kg
Birth Year Growth Rate: 425 g/per day
October Weight: 141 kg
December Weight: 168 kg
45 Day Spring Growth Rate (Oct - Dec): 600 g/per day
3 Year Weight: 310 kg
Eye Muscle Area: 38-10
Sale Day Weight:



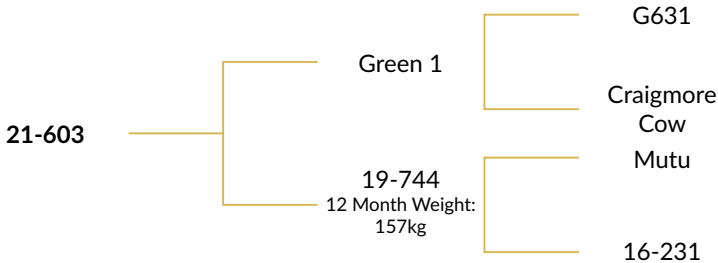
Comments:

Purchaser:
Price:

Lot 4-603

gBreed

Elk 72.10%



Velvet

2 yr 3.80 kg
3 yr 5.60 kg
Beam 17.0 cm

Weaning Weight: 77 kg
Birth Year Growth Rate: 405 g/per day
October Weight: 129 kg
December Weight: 161 kg
45 Day Spring Growth Rate (Oct - Dec): 711 g/per day
3 Year Weight: 298 kg
Eye Muscle Area: 41-20
Sale Day Weight:

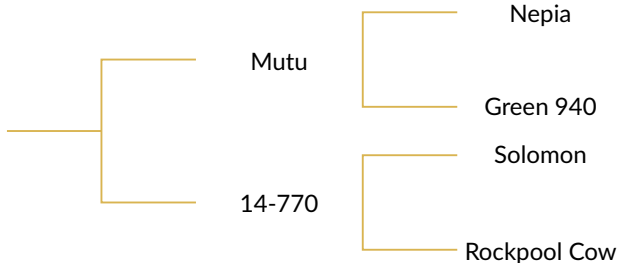


Comments:

Purchaser:
Price:

Lot 5 - 527

21-527



gBreed

Elk 76.30%

Velvet

2 yr 4.20 kg

3 yr 5.85 kg

Beam 20.0 cm

Weaning Weight: 74 kg
 Birth Year Growth Rate: 400 g/per day
 October Weight: 123 kg
 December Weight: 159 kg
 45 Day Spring Growth Rate (Oct - Dec): 800 g/per day
 3 Year Weight: 295 kg
 Eye Muscle Area: 32-61
 Sale Day Weight:



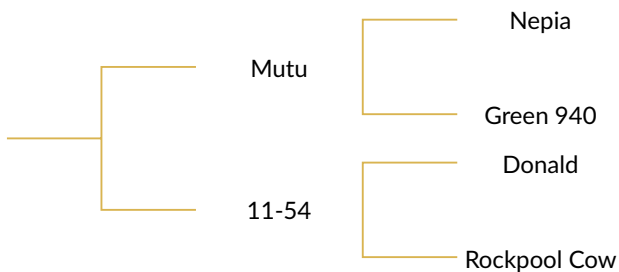
Comments:

Purchaser:

Price:

Lot 6 - 508

21-508



gBreed

Elk 76.40%

Velvet

2 yr 3.30 kg

3 yr 5.70 kg

Beam 18.0 cm

Weaning Weight: 62 kg
 Birth Year Growth Rate: 355 g/per day
 October Weight: 117 kg
 December Weight: 143 kg
 45 Day Spring Growth Rate (Oct - Dec): 577 g/per day
 3 Year Weight: 293 kg
 Eye Muscle Area: 39-25
 Sale Day Weight:



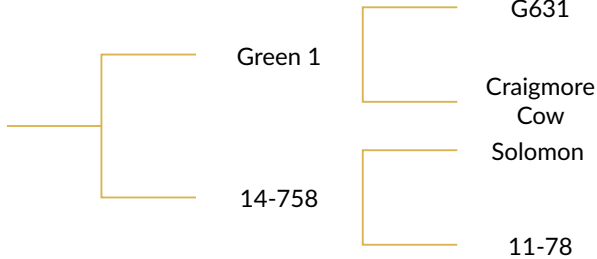
Comments:

Purchaser:

Price:

Lot 7 - 512

21-512



gBreed

Elk 74.60%

Velvet

2 yr 2.95 kg
3 yr 4.20 kg
Beam 16.0 cm

Weaning Weight: 71 kg
Birth Year Growth Rate: 392 g/per day
October Weight: 129 kg
December Weight: 153 kg
45 Day Spring Growth Rate (Oct - Dec): 533 g/per day
3 Year Weight: 291 kg
Eye Muscle Area: 36-65
Sale Day Weight:

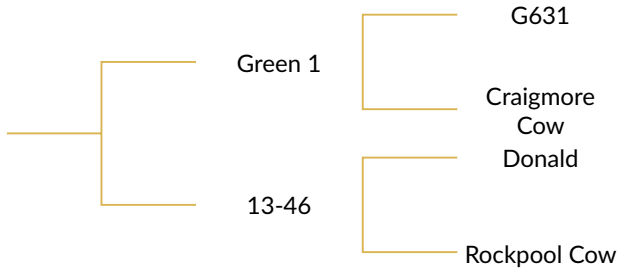


Comments:

Purchaser:
Price:

Lot 8 - 524

21-524



gBreed

Elk 77.30%

Velvet

2 yr 2.95 kg
3 yr 3.70 kg
Beam 15.0 cm

Weaning Weight: 76 kg
Birth Year Growth Rate: 367 g/per day
October Weight: 129 kg
December Weight: 147 kg
45 Day Spring Growth Rate (Oct - Dec): 400 g/per day
3 Year Weight: 281 kg
Eye Muscle Area: 32-93
Sale Day Weight:

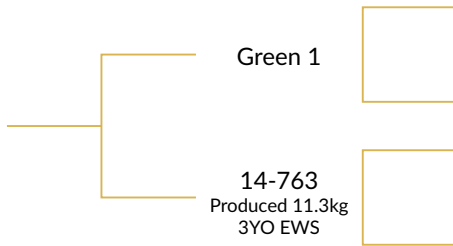


Comments:

Purchaser:
Price:

Lot 9 - 537

20-537



G631

Craigmore
Cow
Solomon

gBreed

Elk 75.40%

Velvet

2 yr 2.75 kg
3 yr 4.15 kg
Beam 15.0 cm

Weaning Weight: 78 kg
 Birth Year Growth Rate: 350 g/per day
 October Weight: 118 kg
 December Weight: 141 kg
 45 Day Spring Growth Rate (Oct - Dec): 511 g/per day
 3 Year Weight: 281 kg
 Eye Muscle Area: 34-17
 Sale Day Weight:

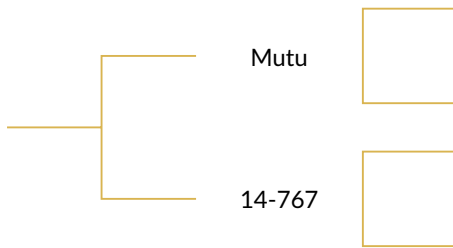


Comments:

Purchaser:
Price:

Lot 10 - 521

21-521



Nepia

Green 940
Solomon

gBreed

Elk 79.30%

Velvet

2 yr 2.55 kg
3 yr 3.95 kg
Beam 16.0 cm

Weaning Weight: 79 kg
 Birth Year Growth Rate: 375 g/per day
 October Weight: 114 kg
 December Weight: 150 kg
 45 Day Spring Growth Rate (Oct - Dec): 800 g/per day
 3 Year Weight: 277 kg
 Eye Muscle Area: 36-95
 Sale Day Weight:

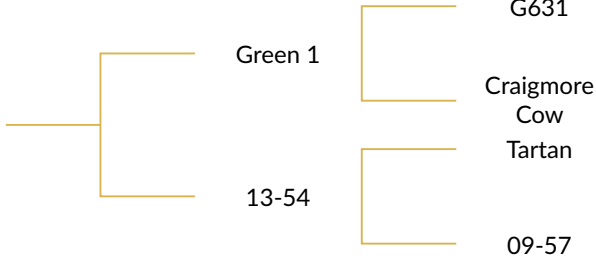


Comments:

Purchaser:
Price:

Lot 11 - 540

21-540



gBreed

Elk 79.20%

Velvet

2 yr 2.30 kg
3 yr 3.10 kg
Beam 15.0 cm

Weaning Weight: 87 kg
Birth Year Growth Rate: 373 g/per day
October Weight: 124 kg
December Weight: 149 kg
45 Day Spring Growth Rate (Oct - Dec): 555 g/per day
3 Year Weight: 274 kg
Eye Muscle Area: 29-73
Sale Day Weight:

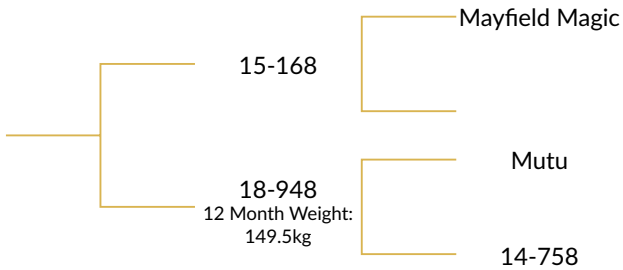


Comments:

Purchaser:
Price:

Lot 12 - 636

21-636



gBreed

Elk 78.80%

Velvet

2 yr 2.30 kg
3 yr 4.05kg
Beam 16.0 cm

Weaning Weight: 73 kg
Birth Year Growth Rate: 339 g/per day
October Weight: 108 kg
December Weight: 137 kg
45 Day Spring Growth Rate (Oct - Dec): 644 g/per day
3 Year Weight: 270 kg
Eye Muscle Area: 33-59
Sale Day Weight:

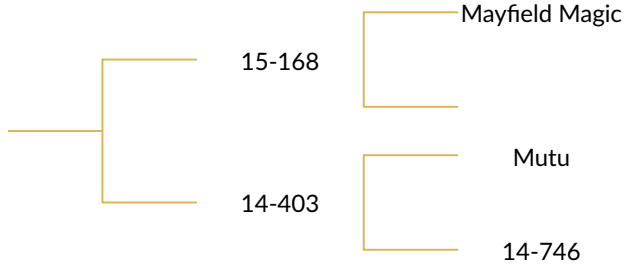


Comments:

Purchaser:
Price:

Lot 13 - 513

21-513



gBreed

Elk 79.50%

Velvet

2 yr 2.95 kg
3 yr 4.60 kg
Beam 16.0 cm

Weaning Weight: 82 kg
Birth Year Growth Rate: 367 g/per day
October Weight: 125 kg
December Weight: 147 kg
45 Day Spring Growth Rate (Oct - Dec): 488 g/per day
3 Year Weight: 269 kg
Eye Muscle Area: 37-92
Sale Day Weight:

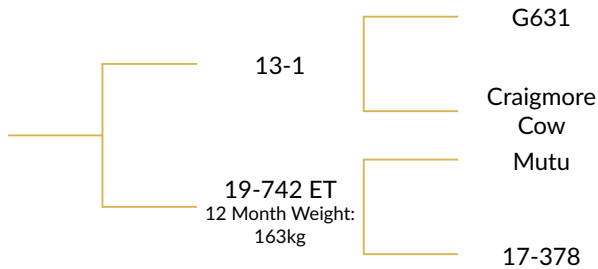


Comments:

Purchaser:
Price:

Lot 14 - 596

21-596



gBreed

Elk 82.00%

Velvet

2 yr 3.80 kg
3 yr 5.20 kg
Beam 17.5 cm

Weaning Weight: 79 kg
Birth Year Growth Rate: 405 g/per day
October Weight: 131 kg
December Weight: 161 kg
45 Day Spring Growth Rate (Oct - Dec): 667 g/per day
3 Year Weight: 268 kg
Eye Muscle Area: 30-89
Sale Day Weight:

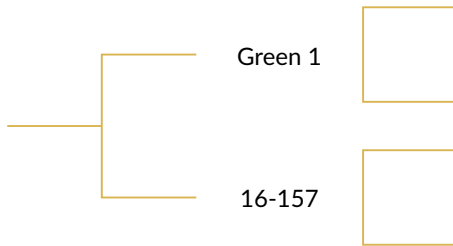


Comments:

Purchaser:
Price:

Lot 15 - 510

20-510



G631

Craigmore
Cow
Tartan

gBreed

Elk 74.70%

Velvet

2 yr 2.55 kg
3 yr 3.20 kg
Beam 16.0 cm

Weaning Weight: 84 kg
 Birth Year Growth Rate: 400 g/per day
 October Weight: 130 kg
 December Weight: 159 kg
 45 Day Spring Growth Rate (Oct - Dec): 644 g/per day
 3 Year Weight: 268 kg
 Eye Muscle Area: 33-40
 Sale Day Weight:

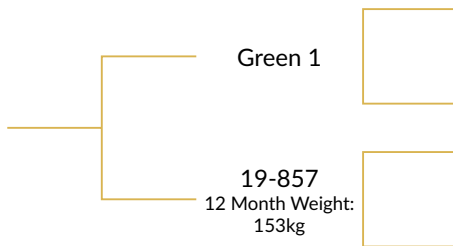


Comments:

Purchaser:
Price:

Lot 16 - 600

21-600



G631

Craigmore
Cow

gBreed

Elk 69.10%

Velvet

2 yr 2.90 kg
3 yr 4.05 kg
Beam 16.0 cm

Weaning Weight: 83 kg
 Birth Year Growth Rate: 363 g/per day
 October Weight: 117 kg
 December Weight: 146 kg
 45 Day Spring Growth Rate (Oct - Dec): 644 g/per day
 3 Year Weight: 266 kg
 Eye Muscle Area: 33-01
 Sale Day Weight:



Comments:

Purchaser:
Price:

Lot 17 - 517

gBreed

Elk 79.80%

21-517

Littlebourne
Black 38

19-714
12 Month Weight:
147kg

Expectation

17-334

Velvet

2 yr 2.40 kg
3 yr 4.20kg
Beam 15.0 cm

Weaning Weight: 91 kg
Birth Year Growth Rate: 380 g/per day
October Weight: 122 kg
December Weight: 151.5 kg
45 Day Spring Growth Rate (Oct - Dec): 655 g/per day
3 Year Weight: 266 kg
Eye Muscle Area: 36-70
Sale Day Weight:



Comments:

Purchaser:
Price:

Lot 18 - 637

gBreed

Elk 82.50%

21-637

Littlebourne
Black 38

19-848
12 Month Weight:
163kg

Tartan

09-339

Velvet

2 yr 2.30 kg
3 yr 3.90 kg
Beam 15.0 cm

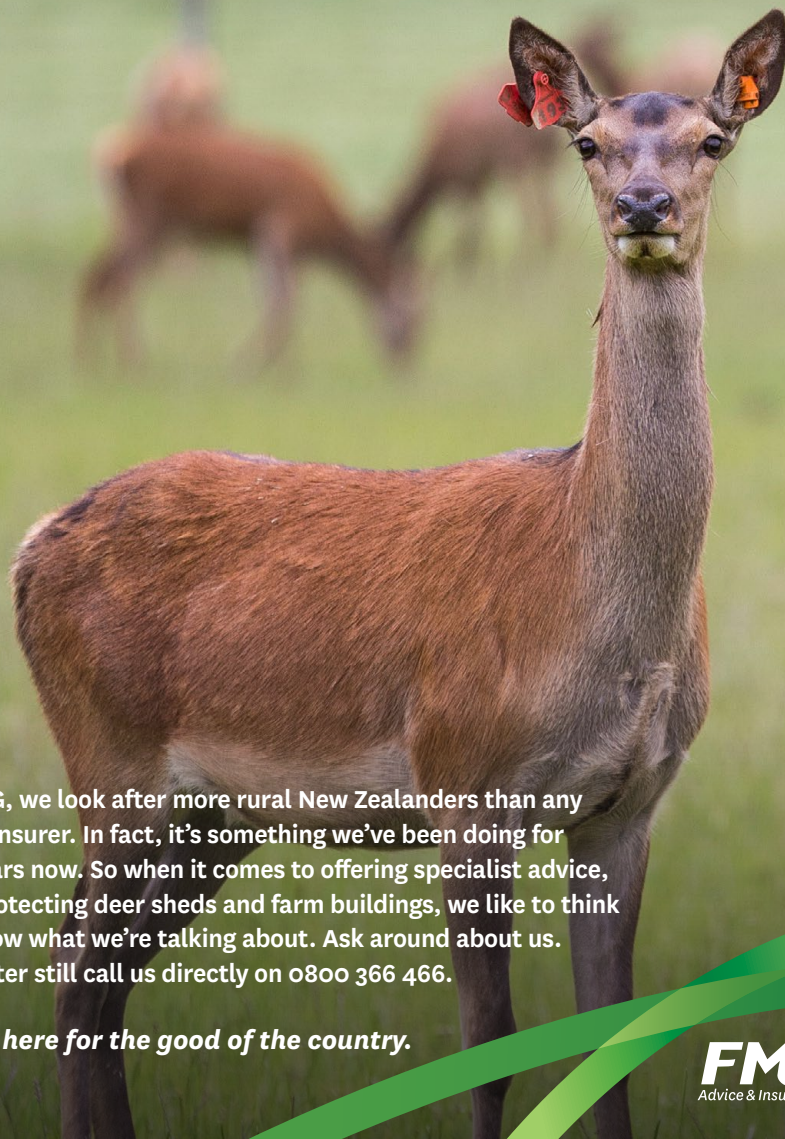
Weaning Weight: 66 kg
Birth Year Growth Rate: 345 g/per day
October Weight: 119 kg
December Weight: 139 kg
45 Day Spring Growth Rate (Oct - Dec): 444 g/per day
3 Year Weight: 264 kg
Eye Muscle Area: 23-87
Sale Day Weight:



Comments:

Purchaser:
Price:

WHEN YOUR ADVICE IS REALLY GOOD, EVERYONE LISTENS.



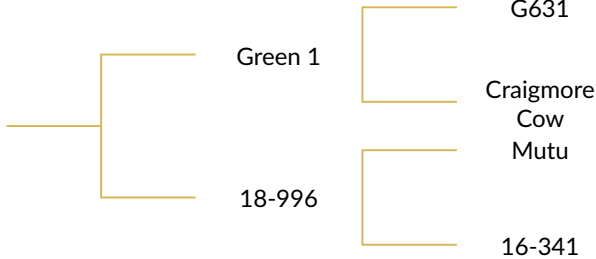
At FMG, we look after more rural New Zealanders than any other insurer. In fact, it's something we've been doing for 114 years now. So when it comes to offering specialist advice, like protecting deer sheds and farm buildings, we like to think we know what we're talking about. Ask around about us. Or better still call us directly on 0800 366 466.

We're here for the good of the country.

FMG
Advice & Insurance

Lot 19 - 625

21-625



gBreed

Elk 81.90%

Velvet

2 yr 2.70 kg
3 yr 4.50kg
Beam 15.0 cm

Weaning Weight: 85 kg
Birth Year Growth Rate: 398 g/per day
October Weight: 131 kg
December Weight: 158 kg
45 Day Spring Growth Rate (Oct - Dec): 600 g/per day
3 Year Weight: 262 kg
Eye Muscle Area: 37-16
Sale Day Weight:

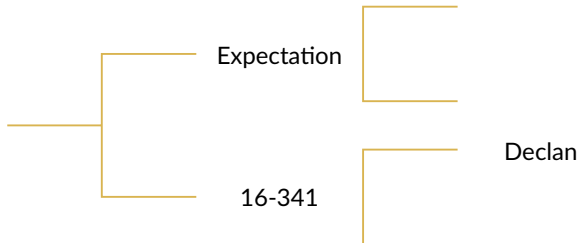


Comments:

Purchaser:
Price:

Lot 20 - 528

21-528



gBreed

Elk 89.50%

Velvet

2 yr 2.40 kg
3 yr 3.60 kg
Beam 15.0 cm

Weaning Weight: 88 kg
Birth Year Growth Rate: 408 g/per day
October Weight: 139 kg
December Weight: 162 kg
45 Day Spring Growth Rate (Oct - Dec): 511 g/per day
3 Year Weight: 261 kg
Eye Muscle Area: 36-16
Sale Day Weight:

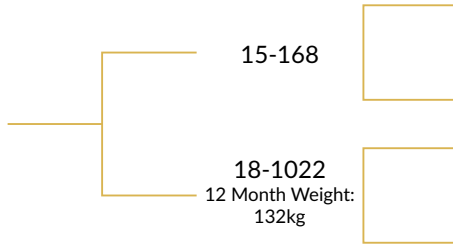


Comments:

Purchaser:
Price:

Lot 21 - 629

21-629



Mayfield
Magic

gBreed

Elk 76.40%

Velvet

2 yr 2.60 kg
3 yr 4.40kg
Beam 16.0 cm

13-1

15-137



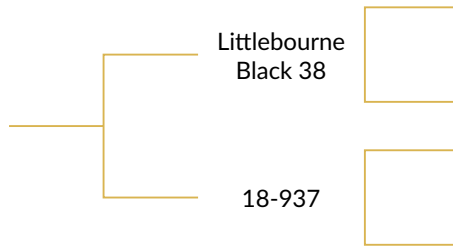
Weaning Weight: 67 kg
Birth Year Growth Rate: 298 g/per day
October Weight: 101 kg
December Weight: 122 kg
45 Day Spring Growth Rate (Oct - Dec): 466 g/per day
3 Year Weight: 260 kg
Eye Muscle Area: 36-95
Sale Day Weight:

Comments:

Purchaser:
Price:

Lot 22 - 628

21-628



Mutu

gBreed

Elk 76.20%

Velvet

2 yr 3.80 kg
3 yr 5.30 kg
Beam 18.0 cm

12-31

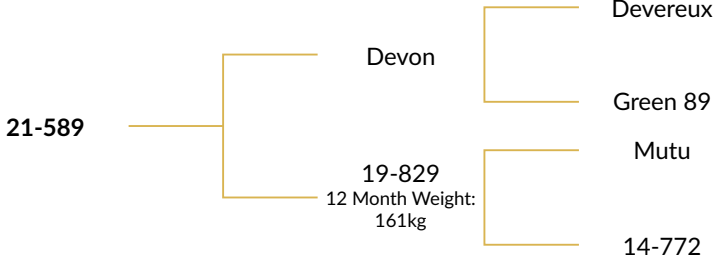


Weaning Weight: 79 kg
Birth Year Growth Rate: 414 g/per day
October Weight: 128 kg
December Weight: 164 kg
45 Day Spring Growth Rate (Oct - Dec): 800 g/per day
3 Year Weight: 258 kg
Eye Muscle Area: 30-40
Sale Day Weight:

Comments:

Purchaser:
Price:

Lot 23 - 589



gBreed

Elk 87.40%

Velvet

2 yr 2.80 kg
3 yr 5.10 kg
Beam 16.5 cm

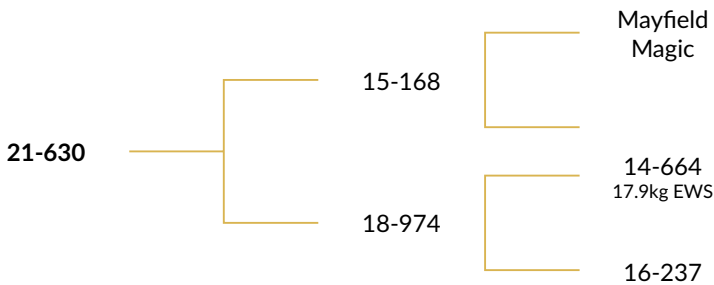
Weaning Weight: 71 kg
Birth Year Growth Rate: 341 g/per day
October Weight: 118 kg
December Weight: 138 kg
45 Day Spring Growth Rate (Oct - Dec): 444 g/per day
3 Year Weight: 246 kg
Eye Muscle Area: 27-89
Sale Day Weight:



Comments:

Purchaser:
Price:

Lot 24 - 630



gBreed

Elk 79.30%

Velvet

2 yr 2.55 kg
3 yr 3.95 kg
Beam 15.0 cm

Weaning Weight: 90.5 kg
Birth Year Growth Rate: 410 g/per day
October Weight: 126 kg
December Weight: 162.5 kg
45 Day Spring Growth Rate (Oct - Dec): 811 g/per day
3 Year Weight: 246 kg
Eye Muscle Area: 33-65
Sale Day Weight:

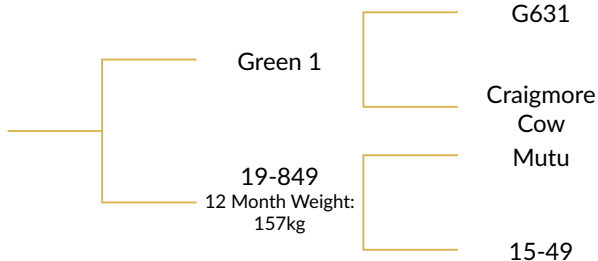


Comments:

Purchaser:
Price:

Lot 25 - 582

21-582



gBreed

Elk 79.30%

Velvet

2 yr 2.40 kg

3 yr 3.85 kg

Beam 15.0 cm

Weaning Weight: 72 kg
 Birth Year Growth Rate: 318 g/per day
 October Weight: 111 kg
 December Weight: 129.5 kg
 45 Day Spring Growth Rate (Oct - Dec): 411 g/per day
 3 Year Weight: 244 kg
 Eye Muscle Area: 21-89
 Sale Day Weight:

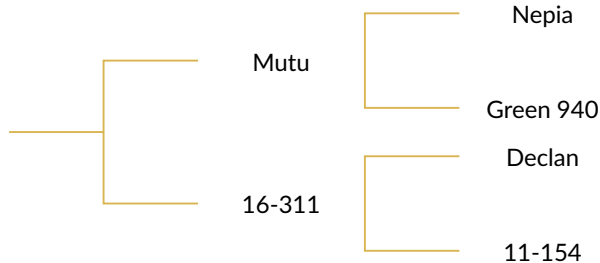


Comments:

Purchaser:
Price:

Lot 26 - 504

21-504



gBreed

Elk 80.90%

Velvet

2 yr 2.60 kg

3 yr 3.80 kg

Beam 17.5 cm

Weaning Weight: 69 kg
 Birth Year Growth Rate: 325 g/per day
 October Weight: 109 kg
 December Weight: 132 kg
 45 Day Spring Growth Rate (Oct - Dec): 511 g/per day
 3 Year Weight: 235 kg
 Eye Muscle Area: 37-70
 Sale Day Weight:

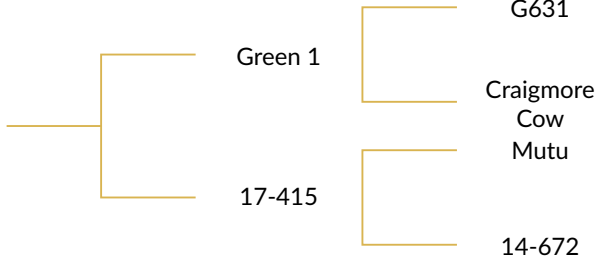


Comments:

Purchaser:
Price:

Lot 27 - 507

21-507



gBreed

Elk 80.50%

Velvet

2 yr 2.90 kg
3 yr 4.30 kg
Beam 15.5 cm

Weaning Weight: 69 kg
Birth Year Growth Rate: 319 g/per day
October Weight: 169.5 kg
December Weight: 130 kg
45 Day Spring Growth Rate (Oct - Dec): 455 g/per day
3 Year Weight: 233 kg
Eye Muscle Area: 27-13
Sale Day Weight:

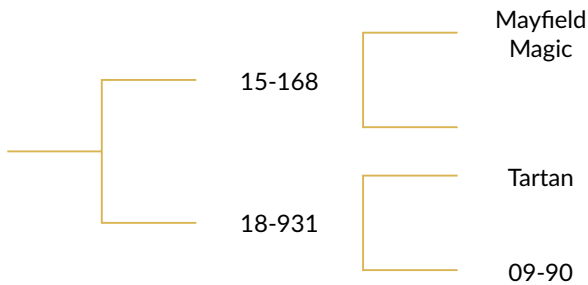


Comments:

Purchaser:
Price:

Lot 28 - 620

21-620



gBreed

Elk 73.00%

Velvet

2 yr 2.75 kg
3 yr 4.70 kg
Beam 17.0 cm

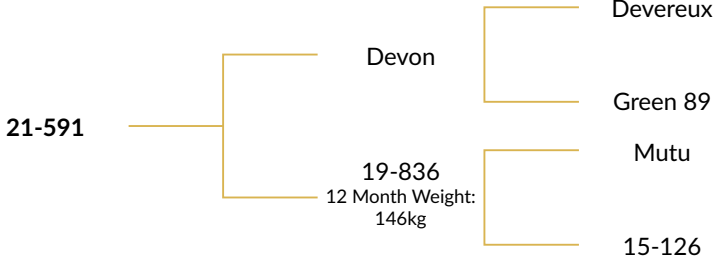
Weaning Weight: 94 kg
Birth Year Growth Rate: 395 g/per day
October Weight: 132 kg
December Weight: 157 kg
45 Day Spring Growth Rate (Oct - Dec): 555 g/per day
3 Year Weight: 229 kg
Eye Muscle Area: 38-40
Sale Day Weight:



Comments:

Purchaser:
Price:

Lot 29 - 591



gBreed

Elk 85.30%

Velvet

2 yr 3.20 kg
3 yr 4.45 kg
Beam 16.0 cm

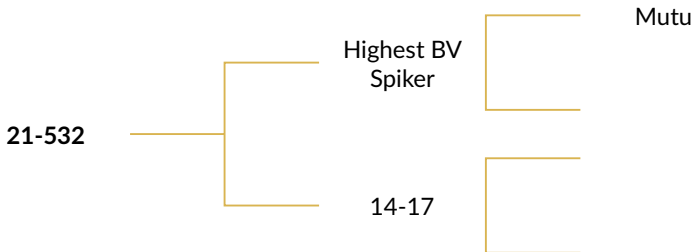
Weaning Weight: 66 kg
Birth Year Growth Rate: 330 g/per day
October Weight: 108 kg
December Weight: 134 kg
45 Day Spring Growth Rate (Oct - Dec): 577 g/per day
3 Year Weight: 229 kg
Eye Muscle Area: 38-10
Sale Day Weight:



Comments:

Purchaser:
Price:

Lot 30 - 532



gBreed

Elk 70.50%

Velvet

2 yr 2.80 kg
3 yr 3.60 kg
Beam 16.5 cm

Weaning Weight: 73 kg
Birth Year Growth Rate: 344 g/per day
October Weight: 113 kg
December Weight: 139 kg
45 Day Spring Growth Rate (Oct - Dec): 577 g/per day
3 Year Weight: 228 kg
Eye Muscle Area: 29-07
Sale Day Weight:



Comments:

Purchaser:
Price:

ASK US ABOUT CUSTOMISED DEER FENCING

Possible customised configurations:

- Customised Line Wires
 - 11 – 20 Line Wires
- Customised Heights
 - 1550mm (61") – 3048mm (120")
- Customised Stay Spacings
 - 75mm (3"), 150mm (6"), 225mm (9"), 300mm (12")
- Customised Lengths
 - 100m to 1000m
- Customised Horizontal Line Wire Spacings
 - (we can match your current farm netting specs)
- Customised Heavier Gauge Top/Bottom Wires
- Two Knots Options



KIWI MADE 

MANUFACTURED
IN N7 
by bayonet

bayonet®

0800 330 320
bayonet.co.nz

Agents & Enquiries

Enquiries

David Morgan | Raincliff – +64 3 614 7183 027 230 3357

Brychan Morgan | Raincliff – 027 361 1237

Brad Travers | Raincliff – 021 244 2265

John Williams | PGG/Wrightson – 027 241 4179

Ben Beadle | PGG/Wrightson – 027 728 1052

Murray Coutts | PGG/Wrightson – 027 403 9377

(N.I) Steve Annan | PGG/Wrightson – 027 215 6671

Luke Thompson | PGG/Wrightson – 027 308 3426

Independent Agents

Sam Martin | Hazlett – 027 561 0000

Graeme Hawker | Hawker Deer – 027 432 3543

Nathan Hawker | Hawker Deer – 021 501 563

Adam Whaanga | RLL – 027 418 3438

Craig North | RLL – 027 418 3438

Clayton Jones | Carrfields Livestock – 027 504 8606

Aaron McCall | RLL – 027 685 5702

Graham Kinsman – 027 422 3154



TONY BRADY FENCING

25+ years experience • Lifestyle blocks
Sheep & cattle yards • Dairy conversions
All aspects of fencing

Covering ALL of South Canterbury

027 297 6202

**WIRE & POST
SPECIALS NZ WIDE**

EMAIL ENQUIRIES TO JASON

 jason@geraldineitm.co.nz

 **022 406 8180**

Prices subject to quantity & location. Terms & Conditions apply

GERALDINE





YOU NEED THE BEST. TO LOOK AFTER THE BEST.

When it comes to the transport of stud livestock you can't go past Downlands Deer and Studstock.

During the past 40 years, we have pioneered the way in studstock transportation with purpose built trucks, calm expert livestock handlers, efficient nationwide transport routing and now with visual tracking from pick up to delivery.

Talk to Downlands Deer and Studstock today to ensure your livestock arrives in the best condition possible.

Downlands
DEER & STUDSTOCK

0800 163 013
office@downlandsdeer.co.nz
www.downlandsdeer.co.nz



Wapiti is our game

- Wapiti marketing programme for 70-100kg Cervena qualifying carcasses.
- More than 20 years focus on farming, processing and marketing venison
- State of the art venison processing facility at Rakaia
- Premium value niche markets around the globe

Our supply chain relies on strong relationships with committed suppliers in the local region and further afield.

CONTACT

Rob Millar

Mobile: 027 523 2229

Email: robm@mountainrivervenison.co.nz



mountainrivervenison.co.nz

TEMUKA TRANSPORT

You can count on our **PROFESSIONAL** and **RELIABLE** services

- Deer Liner
- Stock cartage
- Computerised Lime & Super Spreaders
- Container Lifter
- Bulk Grain cartage
- General Cartage
- Curtainsiders
- Water Supply & Cartage for House & Stock

Temuka

Ph (03) 615 9500

Fax (03) 615 9501

Pleasant Point (Slim)

Ph (03) 614 7290

Fax (03) 614 8015



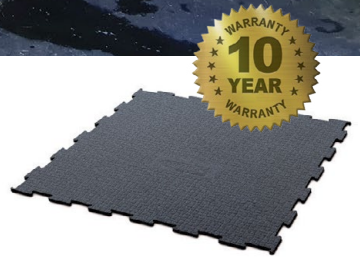
Phone: 0800 TEMUKA or (03) 615 9500 Email: rural@temukatransport.co.nz



Keep calm in the shed

For quieter, calmer, stress-free days in the shed, make the change to quality deer matting.

Anti-slip, non-abrasive, soft on the hoof and quiet underfoot, our durable matting ensures deer are calm and easy to handle. For healthy deer and healthy returns, trust Numat matting.



"Numat has been in our sheds for a number of years. It provides a quieter environment for deer handling, minimises injury, and is easy to clean. We have no hesitation in endorsing Numat."

Dave Morgan



RAINCLIFF STATION
ELK/WAPITI/DEER

Call us for a free consultation today.

0800 686 119 or email info@numat.co.nz
www.numat.co.nz

NUMAT
AGRI

Hooves choose it.



**Proud to
support Raincliff
Station Elk/
Wapiti Stag Sale
2025**



ravensdown



Raincliff Station
AGRICULTURE
VENISON & ANTLER GENETICS

BUYERS DELIVERY INSTRUCTION SLIP

(No verbal instructions can be accepted)

Name.....

Address.....

.....

.....

Lots Purchased.....

.....

Total No.

Consign to.....

.....

Account to

.....

Insurance required Y/N

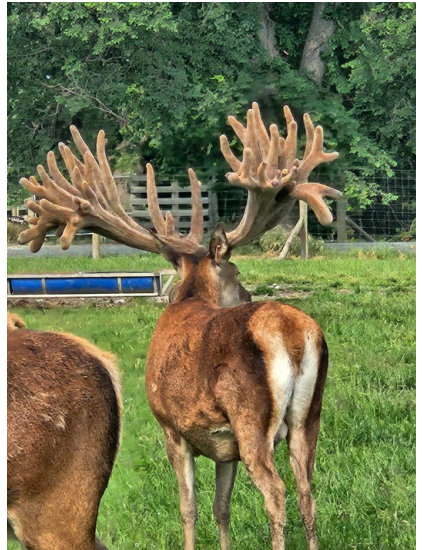
Insurance company

Delivered to

.....

Signature of Buyer.....





NOTES

A series of 20 horizontal dotted lines for writing notes.

ARE YOU LOOKING TO BUY OR SELL FARM MACHINERY?



We are New Zealand's leading machinery brokerage consultants with expertise in the procurement and sale of all your farm machinery needs

With our base of operations in Mid Canterbury, our clients and service capabilities extend New Zealand wide. No matter how big or small your needs are, our team will make the process of buying or selling your next machinery asset a seamless and successful experience.

For more information about our services call

Blair 027 333 6616

ALL AGRI NZ

Machinery Sales & Consultants

www.allagri.co.nz



Raincliff Station

RD12, Pleasant Point, Timaru,
South Canterbury, New Zealand

Phone +64 3 614 7181 | Yard Office +64 3 614 7183

Email david.raincliff@outlook.com

